



Communications Intelligence and Security System

ZyLAB is the standard choice around the world for intelligence and security organizations and agencies in both the public and private sectors.



The complete monitoring platform for intelligence agencies

The ZyLAB Communications Intelligence system is a complete monitoring platform to collect, analyze, and disseminate information concerning conditions abroad which are of importance to national security or to the security of military units deployed on international missions. Such intelligence activities include collection of information of political, financial, scientific, and military interest. It also includes international terrorism, extremists, international arms trafficking, and the proliferation of weapons of mass destruction.

ZYLAB MAKES IT EASY TO:

- Pre-process, collect and store raw data
- Process raw data: telex, fax, e-mail, www, ftp, paper, newspaper clippings, electronic files, etc.
- Enrich: language recognition, image enhancement, OCR, summarizing, topic identification, translations, labeling, link with traffic information, and much more
- Filter: automatically filter data by using advanced search techniques (structured and unstructured)
- Distribute selected information and analyze into reports
- Interactively search through raw material, selected material and older reports

ZyLAB scales to different missions

The ZyLAB Communications Intelligence & Security System contains all products to monitor incoming and outgoing communications, collected via “closed” and open sources. “Closed” sources include electronic intelligence (SIGINT), human intelligence (HUMINT), and bilateral co-operation with a wide range of other intelligence services. Open sources include newspapers, journals, TV, and the Internet.

Profiles with automatic alerts can be set up easily, and data processing volumes are virtually unlimited because every component of the system can be expanded, if needed, to meet the appropriate level of storage capacity and processing power.

Once raw data has been collected via “closed” and “open” sources, the traditional approach is to launch massive review efforts that entail several users who are allocated portions of the data for manual review. These reviewers spend many hours (or days) sifting through irrelevant messages and redundant data. As a result, early intelligence assessments aren’t actually performed early. In fact, hours/days/weeks often pass before your users can understand the true context of an intelligence activity and determine the appropriate intelligence strategy.

With ZyLAB, intelligence officers complete early intelligence assessment much faster and well before manual review. Inside and outside intelligence teams use ZyLAB’s advanced searching, culling and filtering features to rapidly navigate through data from closed and open sources to get a better sense of their position on each intelligence activity.



TYPICAL USES

For OSINT, COMINT, HUMINT, OPINT, and SIGINT

- SDI and current awareness services
- Background information
- Case management

For Large Investigations

- Data monitoring on all kinds of communications
- Confiscated material (paper, pc, and multimedia)
- Observations, hearings and interrogations
- Intelligence, legal and background information

For Managing Intelligence Reports

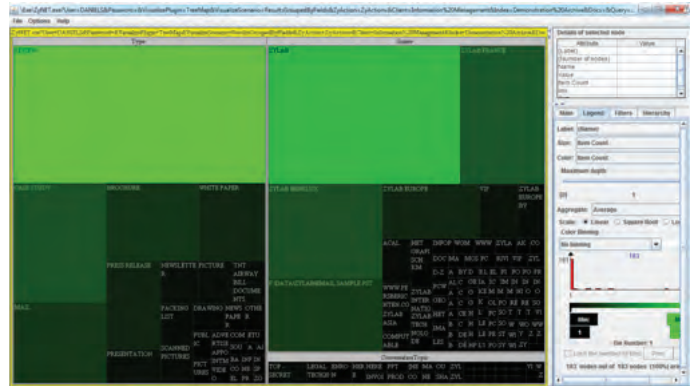
- Compilation of intelligence reports
- Encryption and distribution of reports on CD-Rom or DVD

Advanced Data Visualization

ZyLAB's Visualization Module creates dynamic, interactive overviews of structured data, thereby surpassing traditional table and folder structures as the best way to handle large amounts of information. The solution provides two ways for users to quickly and easily assess the full palette of file information available to them. The foundation of this module is a hyperbolic tree which allows users to view and present their information on an easy-to-use, interactive, multi-dimensional tree with additional visual navigation features such as location, color, size and spatial orientation. The Visualization Module also offers a tree map for quick comparative analysis of large hierarchical structures.

A hyperbolic tree allows users to view and present their information on an easy-to-use, interactive, multi-dimensional structure, with additional visual navigation features such as location, color, size and spatial orientation. Each file is represented as a node that can be clicked on to access the file or grabbed and pulled for better viewing of subfolders. With the hyperbolic tree visualization, users can locate information up to 62.5% faster (Xerox PARC research) than standard navigation methods, significantly increasing productivity.

ZyLAB has also created a space-constrained visualization format for complex hierarchical structures, called a tree-map. This type of mapping uses size variation, color-coding, and individual pop-up descriptors to provide a very effective overview of leaf-node attributes. The tree map enables users to compare nodes and sub-trees even at varying depth in the tree, helping user's spot general patterns and exceptions.



Above: Tree map visualization.

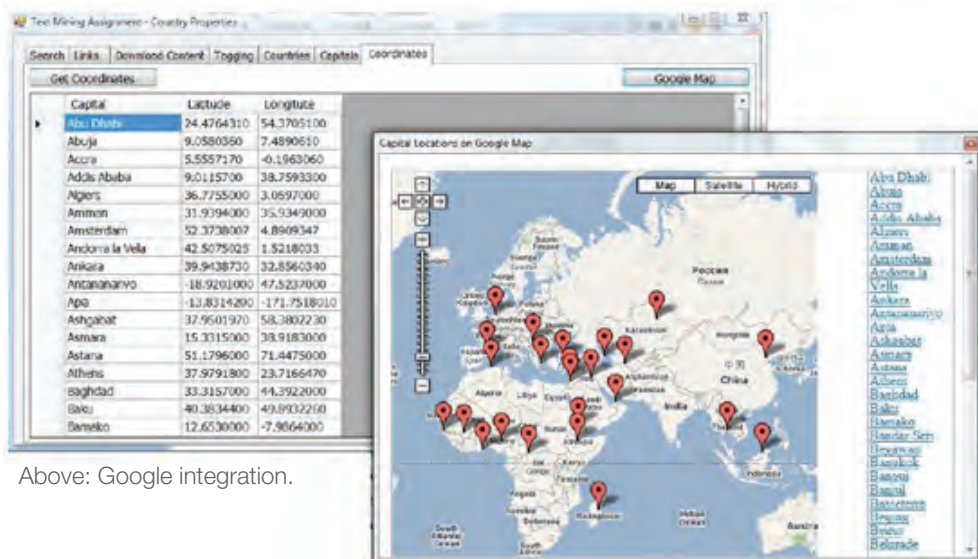
Google Maps Integration

The ZyLAB Information Management Platform's (IAP) Visualization Module now integrates with Google Maps to provide users the ability to identify the location and gain access to geographically dispersed documents. This new capability provides a "single view" of the connections between locations based on the result of the search query on the content of the documents.

Initially developed in support of a customer requiring a solution

to keep track of documents on missing persons, the documents contain coordinates that are visualized on Google Maps.

Users can now execute a search query within the platform. A result list is generated and the complete list of documents is projected as locations (pins) on Google Maps. Every pin represents a document or document set and the user can hover over a pin to obtain additional metadata and allows them to open the document with the provided link.



Above: Google integration.

Word Cloud Integration

Due to the open architecture of the ZyLAB software, it is very easy to integrate certain core functionality of the ZyLAB Information Management Platform with other systems or to integrate your own advanced search tools into the ZyLAB Information Management Platform. A great example is the Word Cloud and thumbnail integration done by the Environmental Protection Agency on their implementation of the ZyLAB Webserver.

“ZyLAB offers our clients, commercial and Federal alike, one of the most comprehensive solutions on the market.”

~ Allan Kalkstein, Vice President and General Manager, Legal Information Management Service's Group, Lockheed Martin Aspen Systems

“ZyLAB offered us the most comprehensive solution. Other companies had specific parts of what we wanted, but nobody was able to put together everything we needed like ZyLAB.”

~ Donna Baur, Records Manager & Deputy Town Clerk, Town of Jackson, Wyoming

“ZyLAB worked with us to create a system that exceeded our original vision and expectations.”

~ Carol Ditzler, Head of Collection Services, US National Agriculture Library

PARTNERING WITH INDUSTRY LEADERS

To ensure the highest product quality and broadest applicability of our solutions, ZyLAB has formed extensive partnerships with renowned industry leaders, including:



ISV/Software Solutions
Networking Infrastructure Solutions



LEARN MORE

Contact ZyLAB North America by calling 1-866-ZYLAB-NA (995-2262) or visit zylab.com to find an authorized reseller.



McLean, Virginia (US HQ) | New York City | San Francisco
Visit zylab.com to locate our international offices.

© 2010 ZyLAB North America. All rights reserved. ZyLAB is a registered trademark. Registration and trademarks belong to their respective owners.